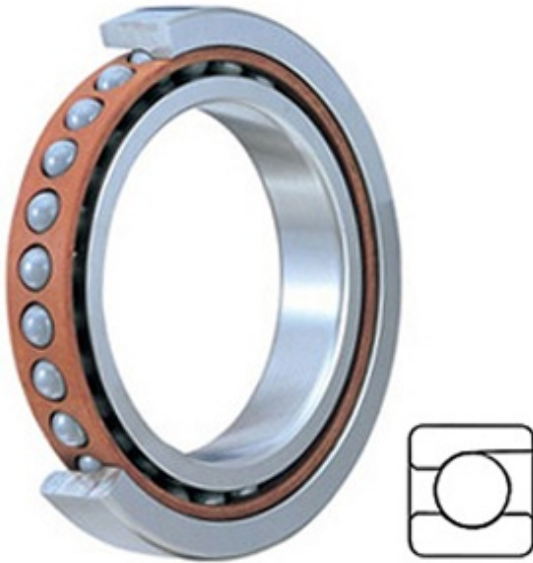




# Timken Making Bearings LTD



2MM210WI Bearing 2D drawings and 3D CAD models

1.969 Inch | 50 Millimeter x 3.543 Inch | 90 Millimeter x 0.787 Inch | 20 Millimeter Timken 2MM210WI Spindle & Precision Machine Tool Angular Contact Bearings

Bearing No. 2MM210WI

Category	Precision Ball Bearings
Inventory	0.0
Manufacturer Name	TIMKEN
Minimum Buy Quantity	N/A
Weight	0.481
EAN	0087796070509
Product Group	B04270
Enclosure	Open
Precision Class	ABEC 7   ISO P4
Material - Ball	Steel
Number of Bearings	1 (Single)
Contact Angle	15 Degree
Preload	None
Raceway Style	1 Rib Outer Ring
Cage Material	Phenolic
Rolling Element	Ball Bearing
Flush Ground	No
Inch - Metric	Metric
Other Features	Single Row   Angular Contact   Super High Precision
Long Description	50MM Bore; 90MM Outside Diameter; 20MM Width; Open Enclosure; ABEC 7   ISO P4 Precision; Steel Ball Material; 1



## Timken Making Bearings LTD

	(Single) Bearings; 15 Degree Contact Angle; Phenolic Cage Material; 1 Rib Outer Ring Rac
Category	Precision Ball Bearings
UNSPSC	31171531
Harmonized Tariff Code	8482.10.50.28
Noun	Bearing
Keyword String	Angular Contact Ball
Manufacturer URL	<a href="http://www.timken.com">http://www.timken.com</a>
Manufacturer Item Number	2MM210WI
Weight / LBS	1.06
B	0.787 Inch   20 Millimeter
D	3.543 Inch   90 Millimeter
d	1.969 Inch   50 Millimeter
d - Bore	50 mm
D - Outer Diameter	90 mm
Bearing Width	20 mm
do - Ball Diameter	12.700 mm
C0 - Static Radial Rating	31700 N
Ce - Dynamic Radial Rating <sup>1</sup>	47400 N
Limiting Speed (Grease)	16000 rpm
Limiting Speed (Oil)	32000 rpm
Ball Type	STEEL
Cage Type	CR - Phenolic Outer Land Riding Cage
Bearing Weight	0.457 Kg
Design Units	METRIC
Full Timken Part Number	2MM210WICR
R - Inner Ring To Clear Radius <sup>2</sup>	1.0 mm
r - Outer Ring To Clear Radius <sup>3</sup>	1.0 mm



## Timken Making Bearings LTD

da - Inner Ring Backing Diameter	57.400 mm
Da - Outer Ring Backing Diameter	83.300 mm