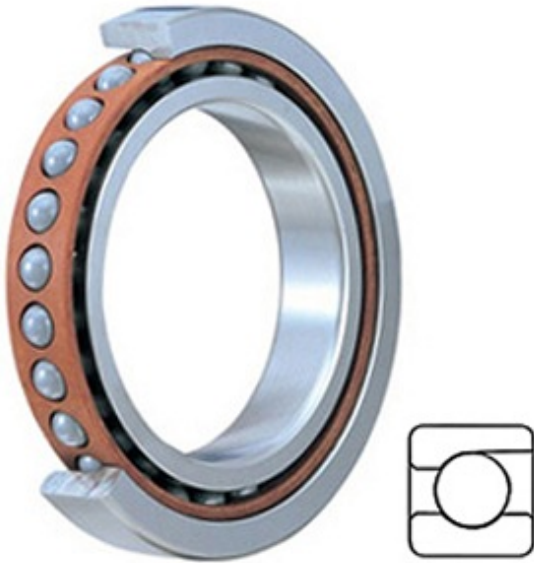




Timken Making Bearings LTD



2MM207WI Bearing 2D drawings and 3D CAD models

1.378 Inch | 35 Millimeter x 2.835 Inch | 72 Millimeter x 0.669 Inch | 17 Millimeter Timken 2MM207WI Spindle & Precision Machine Tool Angular Contact Bearings

Bearing No. 2MM207WI

Category	Precision Ball Bearings
Inventory	0.0
Manufacturer Name	TIMKEN
Minimum Buy Quantity	N/A
Weight	0.295
EAN	0087796070240
Product Group	B04270
Enclosure	Open
Precision Class	ABEC 7 ISO P4
Material - Ball	Steel
Number of Bearings	1 (Single)
Contact Angle	15 Degree
Preload	None
Raceway Style	1 Rib Outer Ring
Cage Material	Phenolic
Rolling Element	Ball Bearing
Flush Ground	No
Inch - Metric	Metric
Other Features	Single Row Angular Contact Super High Precision
Long Description	35MM Bore; 72MM Outside Diameter; 17MM Width; Open Enclosure; ABEC 7 ISO P4 Precision; Steel Ball Material; 1



Timken Making Bearings LTD

	(Single) Bearings; 15 Degree Contact Angle; Phenolic Cage Material; 1 Rib Outer Ring Rac
Category	Precision Ball Bearings
UNSPSC	31171531
Harmonized Tariff Code	8482.10.50.28
Noun	Bearing
Keyword String	Angular Contact Ball
Manufacturer URL	http://www.timken.com
Manufacturer Item Number	2MM207WI
Weight / LBS	0.65
D	2.835 Inch 72 Millimeter
d	1.378 Inch 35 Millimeter
B	0.669 Inch 17 Millimeter
d - Bore	35 mm
D - Outer Diameter	72 mm
Bearing Width	17 mm
do - Ball Diameter	11.1125 mm
C0 - Static Radial Rating	20000 N
Ce - Dynamic Radial Rating ¹	33700 N
Limiting Speed (Grease)	21600 rpm
Limiting Speed (Oil)	43200 rpm
Ball Type	STEEL
Cage Type	CR - Phenolic Outer Land Riding Cage
Bearing Weight	0.28 Kg
Design Units	METRIC
Full Timken Part Number	2MM207WICR
R - Inner Ring To Clear Radius ²	1.0 mm
r - Outer Ring To Clear Radius ³	1.0 mm



Timken Making Bearings LTD

da - Inner Ring Backing Diameter	42.200 mm
Da - Outer Ring Backing Diameter	65.300 mm