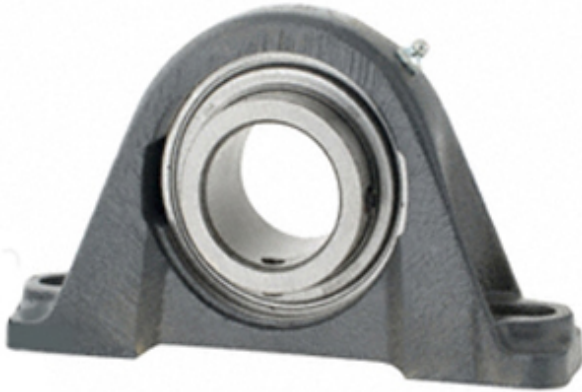




# Timken Making Bearings LTD

1.938 Inch | 49.225 Millimeter x 2.188 Inch |  
 55.575 Millimeter x 2.5 Inch | 63.5 Millimeter  
 Timken YASM1 15/16 Pillow Block Ball Bearing  
 Units



Bearing No. YASM1 15/16

YASM1 15/16 Bearing 2D drawings and 3D CAD models

Category	Pillow Block Bearings
Inventory	1.0
Manufacturer Name	TIMKEN
Minimum Buy Quantity	N/A
Weight	3.64
EAN	0087796189522
Product Group	M06110
Number of Mounting Holes	2
Mounting Method	Set Screw
Housing Style	2 Bolt Pillow Block
Rolling Element	Ball Bearing
Housing Material	Cast Iron
Expansion / Non-expansion	Non-expansion
Mounting Bolts	5/8 Inch
Relubricatable	Yes
Insert Part Number	GYM1115KRRB
Seals	Double Land Riding Rubber Contact
Housing Configuration	1 Piece Solid
Inch - Metric	Inch
Other Features	Single Row   Spherical   Medium Duty   High Base
Long Description	2 Bolt Pillow Block; 1-15/16" Bore; 2-1/2" Base to Center Height; Set Screw



## Timken Making Bearings LTD

	Mount; Ball Bearing; 5-25/32" Minimum Bolt Spacing; 8-3/32" Bolt Spacing Maximum; Relubricatable; Cast I
Category	Pillow Block
UNSPSC	31171511
Harmonized Tariff Code	8483.20.40.40
Noun	Bearing
Keyword String	Pillow Block
Manufacturer URL	<a href="http://www.timken.com">http://www.timken.com</a>
Manufacturer Item Number	YASM 1 15/16
Weight / LBS	8.021
d	1.938 Inch   49.225 Millimeter
D	2.188 Inch   55.575 Millimeter
Bolt Spacing Maximum	8.094 Inch   205.6Millimeter
Actual Bolt Center to Center	0 Inch   0Millimeter
B	2.5 Inch   63.5 Millimeter
Bolt Spacing Minimum	5.781 Inch   146.837Millimeter
Nominal Bolt Center to Center	6.8 Inch   171.5 Millimeter