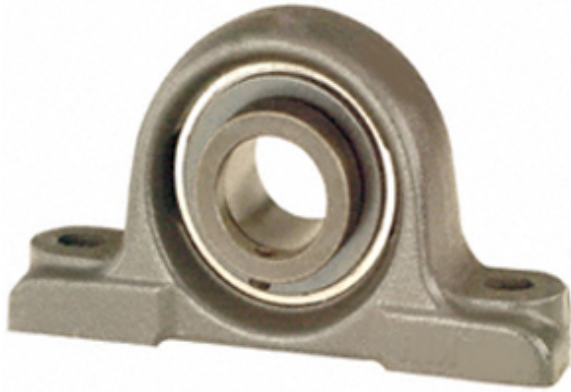




Timken Making Bearings LTD



2.188 Inch | 55.575 Millimeter x 2.875 Inch |
 73.02 Millimeter x 3.063 Inch | 77.8 Millimeter
 Timken LAO2 3/16 Pillow Block Ball Bearing
 Units

Bearing No. LAO2 3/16

LAO2 3/16 Bearing 2D drawings and 3D CAD models

Category	Pillow Block Bearings
Inventory	0.0
Manufacturer Name	TIMKEN
Minimum Buy Quantity	N/A
Weight	7.417
EAN	0087796061156
Product Group	M06110
Number of Mounting Holes	2
Mounting Method	Eccentric Collar
Housing Style	2 Bolt Pillow Block
Rolling Element	Ball Bearing
Housing Material	Cast Iron
Expansion / Non-expansion	Non-expansion
Mounting Bolts	3/4 Inch
Relubricatable	Yes
Insert Part Number	GN203KLLB
Seals	Double Labyrinth
Housing Configuration	1 Piece Solid
Inch - Metric	Inch
Other Features	Single Row Spherical Heavy Duty With Set Screw
Long Description	2 Bolt Pillow Block; 2-3/16" Bore; 3-1/16" Base to Center Height; Eccentric Collar



Timken Making Bearings LTD

	Mount; Ball Bearing; Relubricatable; Cast Iron; Double Labyrinth; Non- expansion
Category	Pillow Block
UNSPSC	31171511
Harmonized Tariff Code	8483.20.40.40
Noun	Bearing
Keyword String	Pillow Block
Manufacturer URL	http://www.timken.com
Manufacturer Item Number	LAO 2 3/16
Weight / LBS	17.49
Actual Bolt Center to Center	9 Inch 229Millimeter
Nominal Bolt Center to Center	9 Inch 229 Millimeter
Bolt Spacing Maximum	0 Inch 0Millimeter
d	2.188 Inch 55.575 Millimeter
D	2.875 Inch 73.02 Millimeter
B	3.063 Inch 77.8 Millimeter
Bolt Spacing Minimum	0 Inch 0Millimeter