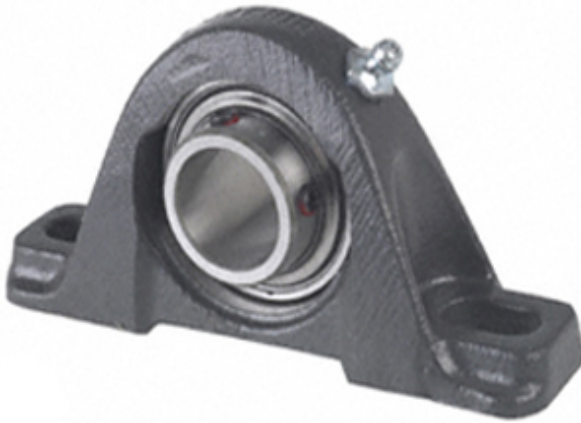




Timken Making Bearings LTD

2.938 Inch | 74.625 Millimeter x 3.063 Inch | 77.8 Millimeter x 3.313 Inch | 84.15 Millimeter Timken YAK2 15/16 Pillow Block Ball Bearing Units



YAK2 15/16 Bearing 2D drawings and 3D CAD models

Bearing No. YAK2 15/16

Category	Pillow Block Bearings
Inventory	4.0
Manufacturer Name	TIMKEN
Minimum Buy Quantity	N/A
Weight	8.74
EAN	0087796157637
Product Group	M06110
Number of Mounting Holes	2
Mounting Method	Set Screw
Housing Style	2 Bolt Pillow Block
Rolling Element	Ball Bearing
Housing Material	Cast Iron
Expansion / Non-expansion	Non-expansion
Mounting Bolts	3/4 Inch
Relubricatable	Yes
Insert Part Number	GY1215KRRB
Seals	Double Land Riding Rubber Contact
Housing Configuration	1 Piece Solid
Inch - Metric	Inch
Other Features	Single Row Spherical Normal Duty Low Base
Long Description	2 Bolt Pillow Block; 2-15/16" Bore; 3-5/16" Base to Center Height; Set Screw Mount; Ball Bearing; 8-1/4"



Timken Making Bearings LTD

	Minimum Bolt Spacing; 10-3/4" Bolt Spacing Maximum; Relubricatable; Cast Ir
Category	Pillow Block
UNSPSC	31171511
Harmonized Tariff Code	8483.20.40.40
Noun	Bearing
Keyword String	Pillow Block
Manufacturer URL	http://www.timken.com
Manufacturer Item Number	YAK 2 15/16
Weight / LBS	19.251
D	3.063 Inch 77.8 Millimeter
Actual Bolt Center to Center	0 Inch 0Millimeter
Nominal Bolt Center to Center	9.5 Inch 241.3 Millimeter
Bolt Spacing Maximum	10.75 Inch 273.05Millimeter
Bolt Spacing Minimum	8.25 Inch 209.55Millimeter
d	2.938 Inch 74.625 Millimeter
B	3.313 Inch 84.15 Millimeter